

BUS BAR



- BB1-1
- 80A DC
- 48V DC
- M6(1/4")/M8(5/16")/M10(3/8")
- 43mm*46mm*32.7mm (LxWxH)



- BB1-1A
- 80A DC
- 48V DC
- M8(5/16")/M10(3/8")
- 53mm*25.5*41.5mm (LxWxH)



- BB2-1
- 80A DC 48V DC
- 2*M6(1/4")
- M8(5/16")/M10(3/8")
- 43mm*46mm*32.7mm (LxWxH)



- BB180-T1M8/M10S8-B
- 120A AC/180A DC
- 300V AC/48V DC
- 1*M8(5/16")/1*M10(3/8")+8*M4(#8)
- 85mm x 46mm x 43mm (LxWxH)



- BB100-T2M6S5-C
- 120A AC/150A DC
- 300V AC/48V DC
- 2*M6(1/4")+5*M4(#8)
- 160mm x 23mm x 28.5mm (LxWxH)



- BB100-T4M5-C
- 120A AC/150A DC
- 300V AC/48V DC
- 4*M5(3/16")
- 106mm*23mm*28.5mm (LxWxH)



- BB100-T4M8-C
- 120A AC/150A DC
- 300V AC/48V DC
- 4*M8(5/16")
- 106mm*23mm*28.5mm (LxWxH)



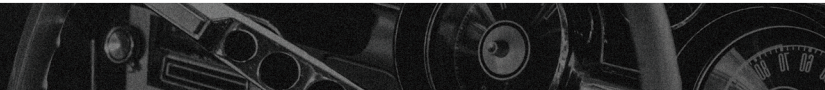
- BB100-T5M6-C
- 120A AC/150A DC
- 300V AC/48V DC
- 5*M6(1/4")
- 106mm*23mm*28.5mm (LxWxH)



- BB150-T1M6S12-C
- 120A AC/150A DC
- 300V AC/48V DC
- 1*M6(1/4")+12*M4(#8)
- 135mm*33.2mm*14.3mm (LxWxH)



- BB150-T2M6S12-C
- 120A AC/150A DC
- 300V AC/48V DC
- 2*M6(1/4")+12*M4(#8)
- 150mm x 28mm x 35mm (LxWxH)



BUS BAR



- BB150-T4M8S6-C
- 120A AC/150A DC
- 300V AC/48V DC
- 4*M8(5/16")+6*M4(#8)
- 150mm x 28mm x 35mm (LxWxH)



- BB150-T5M8-C
- 120A AC/150A DC
- 300V AC/48V DC
- 5*M8 (5/16")
- 150mm x 28mm x 35mm(LxWxH)



- BB150-T6M6/M8-C
- 120AAC/150A DC
- 300V AC/48V DC
- M6(1/4")/M8(5/16")
- 150mm x 28mm x 35mm (LxWxH)



- BB150-T7M6-C
- 120A AC/150A DC
- 300V AC/48V DC
- 4*M10(3/8")+3*M4(#8)
- 150mm x 28mm x 35mm (LxWxH)



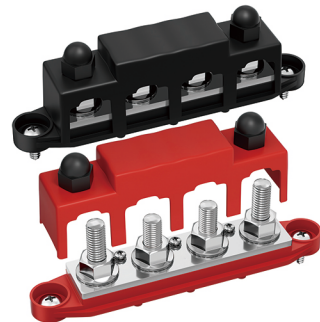
- BB250-T2M10/M8
- 250A DC
- 48V DC
- 2*M10(3/8")/M8(5/16")
- 80mm x 22mm x 52mm (LxWxH)



- BB250-T3M8S10-C-2
- 250A DC
- 48V DC
- 3*M8(5/16")+10*M4(#8)
- 168mm x 33.5mm x 53mm (LxWxH)



- BB250-T4M8S3-C-2
- 250A DC
- 48V DC
- 4*M8(5/16")+3*M4(#8)
- 168mm x 33.5mm x 53mm (LxWxH)



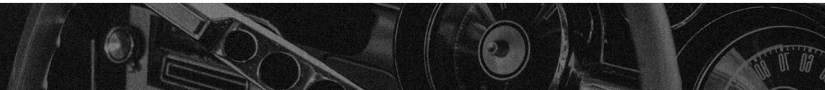
- BB250-T4M10S3-C-2
- 250A DC
- 48V DC
- 4*M10(3/8")+3*M4(#8)
- 168mm x 33.5mm x 53mm (LxWxH)



- BB250X2-T4M10S3-C
- 250A DC
- 48V DC
- 4*M10(3/8")+3*M4(#8)
- 126mm x 81.9mm x 53mm (LxWxH)



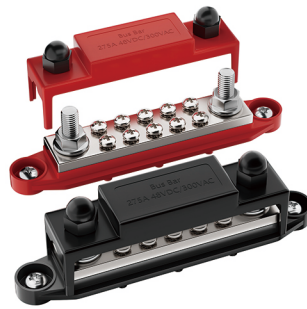
- BB250X2-T6M8-C
- 250A DC
- 48V DC
- 6*M8(5/16")
- 126mm x 81.9mm x 53mm (LxWxH)



BUS BAR



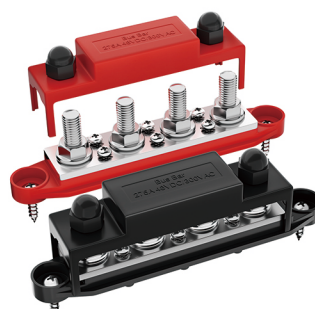
- BB275-T2M8S14-C
- 275A DC
- 48V DC
- 2*M8(5/16")+14*M4(#8)
- 168mm x 33.5mm x 53mm (LxWxH)



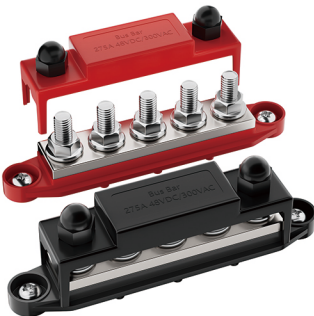
- BB275-T2M10S10-C
- 275A DC
- 48V DC
- 2*M10(3/8")+10*M4(#8)
- 168mm x 33.5mm x 53mm (LxWxH)



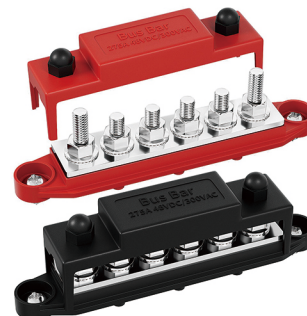
- BB275-T4M8S6-C
- 250A DC
- 48V DC
- 4*M8(5/16")+3*M4(#8)
- 168mm x 33.5mm x 53mm (LxWxH)



- BB275-T4M10S6-C
- 250A DC
- 48V DC
- 4*M10(3/8")+3*M4(#8)
- 168mm x 33.5mm x 53mm (LxWxH)



- BB275-T5M10-C
- 250A DC
- 48V DC
- 5*M10(3/8")
- 168mm x 33.5mm x 53mm (LxWxH)



- BB275-T6M8-C
- 275A DC
- 48V DC
- 6*M8(5/16")
- 168mm x 33.5mm x 53mm (LxWxH)



- BB300-T3M10S10-C
- 300A
- 300V AC/48V DC
- 3*M10(3/8")+10*M4(#8)
- 178mm x 37.8mm x 43.2mm (LxWxH)



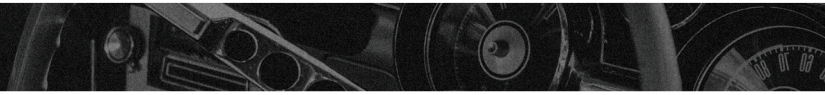
- BB300-T6M10-C
- 300A
- 300V AC/48V DC
- 6*M10(3/8")
- 178mm x 37.8mm x 43.2mm (LxWxH)



- BB300-T4M8-C-BOX1
- 300A
- 300V AC/48V DC
- 4*M8(5/16")
- 138mm x 69mm x 35mm (LxWxH)



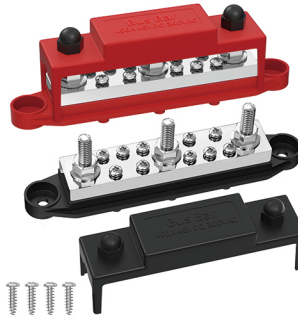
- BB300-T4M10-C-BOX1
- 300A
- 300V AC/48V DC
- 4*M10(3/8")
- 138mm x 69mm x 35mm (LxWxH)



BUS BAR



- BB400-T3M10S8-C-B-2
- 400A
- 300V AC/48V DC
- 3*M10(3/8")+8*M4(#8)
- 166mm x34mm x 43.1mm (LxWxH)



- BB400-T3M8S10-C-B-2
- 400A
- 300V AC/48V DC
- 3*M8(5/16")+10*M4(#8)
- 166mm x34mm x 43.1mm (LxWxH)



- BB400-T4M8S3-C-B-2
- 400A
- 300V AC/48V DC
- 4*M8(5/16")+3*M4(#8)
- 166mm x34mm x 43.1mm (LxWxH)



- BB400-T4M10S6-C
- 400A
- 300V AC/48V DC
- 4*M10(3/8")+6*M4(#8)
- 166mm x34mm x 43.1mm (LxWxH)



- BB400-T6M8-C-B
- 400A
- 300V AC/48V DC
- 6*M8(5/16")
- 166mm x34mm x 43.1mm (LxWxH)



- BB400X2-T2M8-B
- 400A
- 300V AC/48V DC
- 2*M8(5/16")
- 124.7mm x86.3mm x 46.4mm (LxWxH)



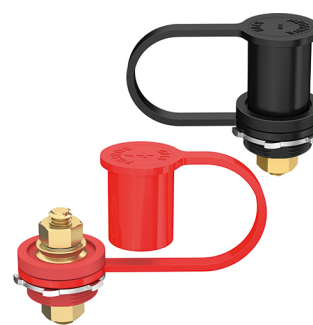
- BB500-T6M8X4M10X2
- 500A
- 300V AC/48V DC
- 6*M8(5/16")
- 124mm x86mm x 46.5mm (LxWxH)



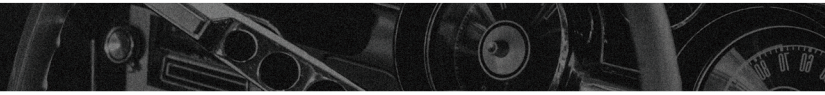
- BB600-T6M10-C-B
- 600A
- 300V AC/48V DC
- 6*M10(3/8")
- 178mm x37.8mm x 53.2mm (LxWxH)



- BCP-1
- 500A
- 1*M10(3/8")
- Install Hole Size:31mm
- Length of Stud:30mm



- BCP-2
- 500A
- 1*M10(3/8")
- Install Hole Size:31mm
- Length of Stud:30mm



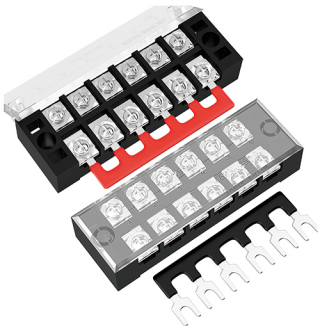
BUS BAR



- BCP-1K
- Battery Post Kit
- 2*M10(3/8") with PCB Bracket
- Install Size:19mm



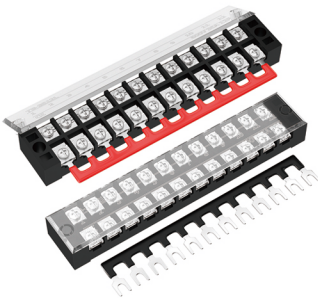
- BCP-3K
- Battery Post Kit
- 2*M10(3/8") with PCB Bracket
- Install Size:19mm



- TB-3506
- 600V 35A Terminal Block
- 12mm Space
- 6 Position with cover.



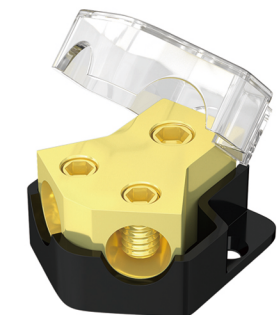
- TB-3510
- 600V 35A Terminal Block
- 12mm Space
- 10 Position with cover



- TB-3512
- 600V 35A Terminal Block
- 12mm Space
- 12 Position with cover



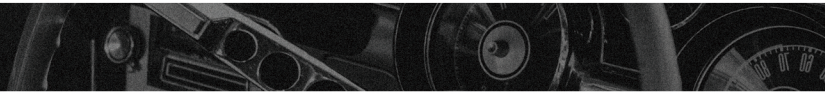
- DB-38
- 4 Way Power Distribution Block
- 1x0/2/4 AWG Gauge in
- 4x4/8/10 Gauge Out



- DB-43
- 2 Way Power Distribution Block
- 1x0/2/4 AWG Gauge in
- 2x4/8/10 Gauge Out



- DB-27
- 3 Way Power Distribution Block
- 1x 0 AGW Gauge in
- 3X 4 Gauge Out



BATTERY SWITCH



- ASW-A701
- Continuous(Amp):275A(12V)
- Crank(Amp):1250A(12V)
- Voltage:12-48VDC
- Terminal Stud:2*M10(3/8")
- Operation:ON-OFF



- ASW-A701S
- Continuous(Amp):275A(12V)
- Crank(Amp):1250A(12V)
- Voltage:12-48VDC
- Terminal Stud:3*M8(5/16")
- Operation:1-2-Both-OFF



- ASW-A720
- Continuous(Amp):600A(12V)
- Crank(Amp):2500A(12V)
- Voltage:12-48VDC
- Terminal Stud:2*M12(1/2")
- Operation:ON-OFF



- ASW-A720S
- Continuous(Amp):600A(12V)
- Crank(Amp):2500A(12V)
- Voltage:12-48VDC
- Terminal Stud:3*M10(3/8")
- Operation:1-2-Both-OFF



- ASW-A1201
- Continuous(Amp):600A(12V)
- Crank(Amp):2500A(12V)
- Voltage:12-48VDC
- Terminal Stud:2*M10(3/8")
- Operation:ON-OFF



- ASW-A1201S
- Continuous(Amp):600A(12V)
- Crank(Amp):2500A(12V)
- Voltage:12-48VDC
- Terminal Stud:3*M8(5/16")
- Operation:1-2-Both-OFF



- ASW-A702 Panel-Monuted
- Continuous(Amp):275A (12V)
- Crank(Amp):1250A(12V)
- Voltage:12-48VDC
- Terminal Stud:2*M10(3/8")
- Operation:ON-OFF



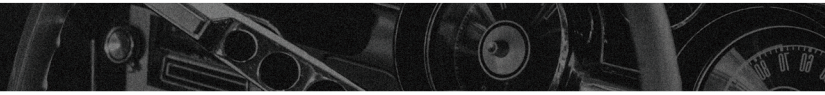
- ASW-A701S-B
- Continuous(Amp):275A (12V)
- Crank(Amp):1250A(12V)
- Voltage:6-32VDC
- Terminal Stud:3*M8(5/16")
- Operation:1-2-Both-OFF



- ASW-A701N
- Continuous (Amp):275A(12V)
- Crank (Amp) :1250A (12V)
- Voltage:12-48VDC
- Terminal Stud:2*M10 (3/8")
- Operation:ON-OFF



- ASW-A05
- Continuous (Amp) :200A
- Crank (Amp) :1000A 5S
- Voltage:12-24VDC
- Operation:ON-OFF



BATTERY SWITCH



- ASW-A705-50A
- Continuous(Amp):50A
- Crank(Amp):300A 5S
- Voltage:12-32VDC
- Terminal Stud:2*M4*0.7
- Operation:ON-OFF



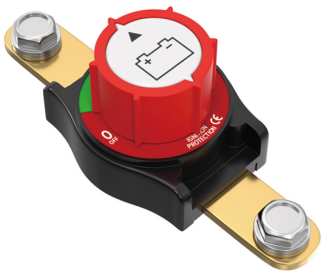
- ASW-A705-100A
- Continuous (Amp) :100A
- Crank (Amp):500A 5S
- Voltage:12-32VDC
- Terminal Stud:2*M6*1
- Operation:ON-OFF



- ASW-A705-200A
- Continuous (Amp) :200A
- Crank (Amp) :1000A 5S
- Voltage:12-32VDC
- Terminal Stud:2*M8*1
- Operation:ON-OFF



- ASW-A705-300A
- Continuous (Amp) :300A
- Crank (Amp) :1000A 30S
- Voltage:12-32VDC
- Terminal Stud:2*M10*1.25
- Operation:ON-OFF



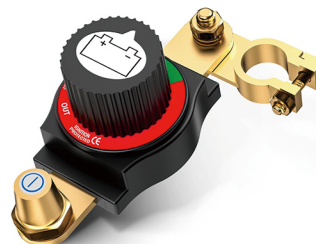
- ASW-A71001
- Continuous (Amp) :250A
- Crank (Amp) :1000A 5S
- Voltage:12-48VDC
- Operation:ON-OFF



- ASW-A71002
- Continuous (Amp) :250A
- Crank (Amp) :1000A 5S
- Voltage:12-48VDC
- Operation:ON-OFF



- ASW-C71002
- Continuous (Amp) :250A
- Crank (Amp):1000A 5S
- Voltage:12-48VDC
- Operation:ON-OFF (Positive)



- ASW-C71003
- Continuous (Amp) :250A
- Crank (Amp):1000A 5S
- Voltage:12-48VDC
- Operation:ON-OFF (Negative)



- ASW-D71001
- Continuous (Amp) :250A
- Crank (Amp):1000A 5S
- Voltage:12-48VDC
- Operation:ON-OFF



- ASW-D71002
- Continuous (Amp) :250A
- Crank (Amp) :1000A 5S
- Voltage:12-48VDC
- Operation:ON-OFF

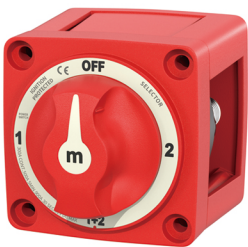
BATTERY SWITCH



- ASW-A6004
- Continuous (Amp) :300A
- Crank (Amp):900A
- Voltage:12-48VDC
- Terminal Stud:2*M10(3/8")
- Operation:OFF-ON



- ASW-A6006
- Continuous (Amp) :300A
- Crank (Amp):900A
- Voltage:12-48VDC
- Terminal Stud:2*M10(3/8")
- Operation:OFF-ON



- ASW-A6007
- Continuous (Amp) :300A
- Crank (Amp):900A
- Voltage:12-48VDC
- Terminal Stud:3*M10(3/8")
- Operation:1-Both-2-OFF



- ASW-A6008
- Continuous (Amp) :300A
- Crank (Amp):900A
- Voltage:12-48VDC
- Terminal Stud:2*M10(3/8")
- Operation:1-OFF-2



- ASW-A1204
- Continuous (Amp) :350A
- Crank (Amp):1200A
- Voltage:12-48VDC
- Terminal Stud:2*M10(3/8")
- Operation:ON-OFF



- ASW-A1204S
- Continuous (Amp) :350A
- Crank (Amp):1200A
- Voltage:12-48VDC
- Terminal Stud:3*M10(3/8")
- Operation:Selector 4 Position



- ASW-A01
- Rating:300A 60VDC
- Terminal Stud:2*M10 (3/8")
- Operation:ON-OFF
- Installing: 4x40mm



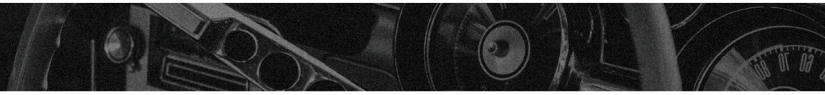
- ASW-A01B
- Rating:300A 60VDC
- Terminal Stud:2*M10 (3/8")
- Operation:ON-OFF
- Installing: 2x40mm



- ASW-A802
- Continuous (Amp) :200A
- Crank (Amp):400A
- Voltage:12-24VDC
- Terminal Stud:2*M10 (3/8")
- Operation:ON-OFF



- ASW-A803
- Continuous (Amp) :200A
- Crank (Amp):1000A
- Voltage:12-24VDC
- Terminal Stud:2*M10 (3/8")
- Operation:ON-OFF



BATTERY SWITCH



- ASW-A804-R
- Continuous (Amp) :200A
- Voltage:12-24VDC
- Terminal Stud:2*M12 (3/8")
- Operation:ON-OFF



- ASW-A805
- Continuous (Amp) :200A
- Voltage:12-24VDC
- Terminal Stud:2*M10 (3/8")
- Operation:ON-OFF
- Installing: 2x40mm



- ASW-A806
- Continuous (Amp) :200A
- Voltage:12-24VDC
- Terminal Stud:2*M12(3/8")
- Operation:ON-OFF
- Installing: 2x40mm



- ASW-A808
- Continuous (Amp) :500A
- Crank (Amp):5000A
- Voltage:12-24VDC
- Terminal Stud:2*M10(3/8")
- Operation:ON-OFF



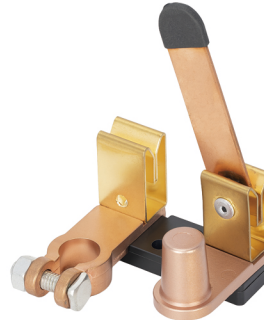
- ASW-A901
- Continuous (Amp) :430A
- Crank (Amp):1000A
- Voltage:12-24VDC
- Diameter:19mm/Position
- Cable Size:4-6AWG



- ASW-A902
- Continuous (Amp) :430A
- Crank (Amp):1000A
- Voltage:12-24VDC
- Diameter:17.5mm /Negative
- Cable Size:4-6AWG



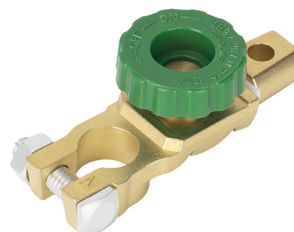
- ASW-A1001
- Continuous (Amp) :250A
- Crank (Amp):750A
- Voltage:12-24VDC
- Diameter:3/8
- Cable Size:4-6AWG



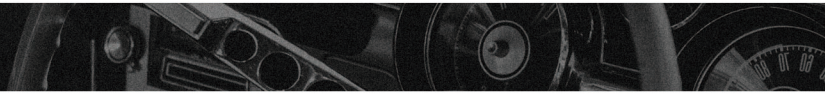
- ASW-A1002
- Continuous (Amp) :250A
- Crank (Amp):750A
- Voltage:12-24VDC
- Diameter:17.5mm /Negative
- Cable Size:4-6AWG



- 56-00024
- Continuous (Amp):80A
- Voltage:6/12VDC
- Diameter:63*20mm
- Screw Size:6mm



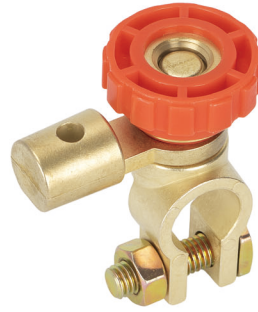
- 56-00026
- Continuous (Amp) :125A
- Crank (Amp):500A
- Voltage:12-24VDC
- Diameter:17.5mm /Negative
- Cable Size:4-6AWG



BATTERY SWITCH



- 56-00027
- Continuous (Amp) :125A
- Crank (Amp):500A
- Voltage:12-24VDC
- Diameter:17.5mm /Negative
- Cable Size:4-6AWG



- 56-00028
- Continuous (Amp) :125A
- Crank (Amp):500A
- Voltage:12-24VDC
- Diameter:17.5mm /Negative
- Cable Size:4-6AWG



- CCI10-25
- Stud CableCap Insulator
- Cable Size:10AWG-4AWG (10-25mm²)



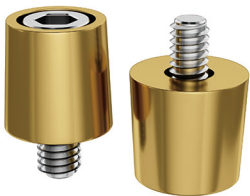
- CCI25-70
- Stud CableCap Insulator
- 4AWG-2/0AWG(25-70mm²)



- CCI50-95
- Stud CableCap Insulator
- Cable Size:1/0AWG-4/0AWG(50-95mm²)



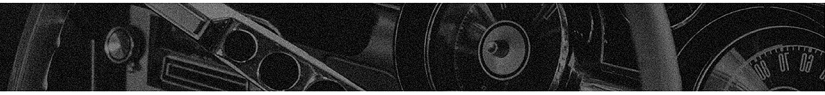
- Battery Cable Ends



- BTP-2M-M8
- Battery Terminal Adapter M8



- BTP-3-M8
- Battery Terminal Adapter M8



BLADE FUSE BLOCK



- FB-1709L
- Input Wire : M5 threaded stud
- (100A, 32V DC Max)
- Input Wire Size: # 4-6 AWG
- Output Wire :30A max per circuit
- Output Wire Size: #12-16 AWG
- 6 Circuits with Cover



- FB-1713
- Input Wire Terminal:
- M5 threaded stud (100A, 32V DC Max)
- Input Wire Size: # 4-6 AWG
- Output Wire :30A max per circuit
- Output Wire Size: #12-16 AWG
- 6 Way Block with Negative Bus



- FB-1711L
- Input Wire : M5 threaded stud
- (100A, 32V DC Max)
- Input Wire Size: # 4-6 AWG
- Output Wire :30A max per circuit
- Output Wire Size: #12-16 AWG
- 10 Circuits with Cover



- FB-1901
- Input Wire : M6 Bolt (75A, 32V DC Max)
- Input Wire Size: # 4-6 AWG
- Output Wire : M4 Stud
- (20A, 32V DC Max)
- Output Wire Size: #12-16 AWG
- 6 Way Block with Negative Bus



- FB-1714
- Input Wire : M5 threaded stud
- (100A, 32V DC Max)
- Input Wire Size: # 4-6 AWG
- Output Wire :30A max per circuit
- Output Wire Size: #12-16 AWG
- 12 Way Block with Negative Bus



- FB-1902
- Input Wire : M6 Bolt (75A, 32V DC Max)
- Input Wire Size: # 4-6 AWG
- Output Wire : M4 Stud
- (20A, 32V DC Max)
- Output Wire Size: #12-16 AWG
- 12 Way Block with Negative Bus



- FH-721-1
- 4Way Blade Fuse Holder
- Fuse:1A-40A
- Install Size:78mm
- Nickel plated copper terminals



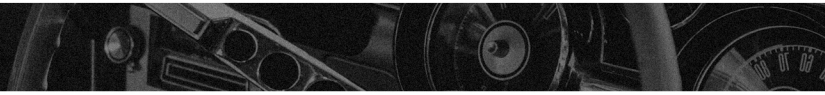
- FH-722-1
- 6Way Blade Fuse Holder
- Fuse:1A-40A
- Install Size:108mm
- Nickel plated copper terminals



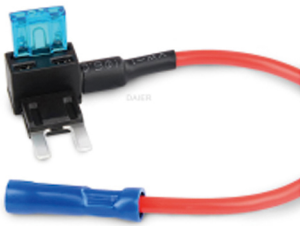
- FH-723-1
- 8Way Blade Fuse Holder
- Fuse:1A-40A
- Install Size:140mm
- Nickel plated copper terminals



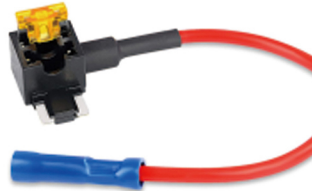
- FH-725-1
- 12 Way Blade Fuse Holder
- Fuse:1A-40A
- Install Size:203mm
- Nickel plated copper terminals



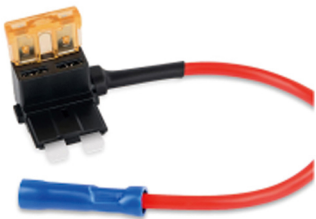
BLADE FUSE BLOCK



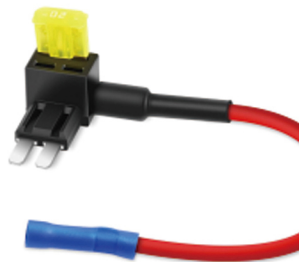
- QSB-1
- Fuse: Mini(APS/ATT)
- Cable Type: 16 AWG.
- Wire Length: 6 inches



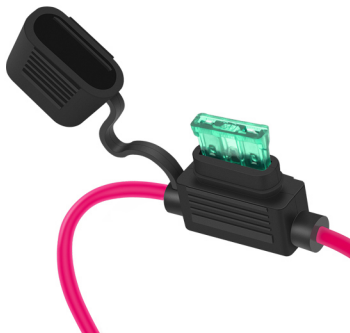
- QSB-2
- Fuse: Low Profile
- Mini(APS/ATT)
- Cable Type: 16 AWG.
- Wire Length: 6 inches



- QSC-1
- Fuse: Standard
- (APR/ATC/ATO/ATS)
- Cable Type: 16 AWG.
- Wire Length: 6 inches.



- QSA-1
- Fuse: ATR/APT Micro 2 Fuse
- Cable Type: 16 AWG.
- Wire Length: 6 inches



- F114-C
- ATC/ATO Fuse Holder
- 12AWG 30cm Wire



- F117-C
- ATC/ATO Fuse Holder
- 12AWG 15CM Wire



- MBF-1
- Mini ATM/APM Fuse
- Voltage: DC 32V or less
- Amp: 1A-40A



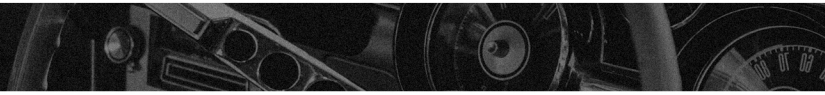
- MBF-2
- Low Profile Mini(APS/ATT)
- Voltage: DC 32V or less
- Amp: 1A-40A



- ABF-1
- Standard (APR/ATC/ATO/ATS)
- Voltage: DC 32V or less
- Amp: 1A-40A



- XBF-1
- MAX
- Voltage: DC 32V or less
- Amp: 20A-100A



CAR FUSE HOLDER



- AGU FUSE
- 10x38 Glass Fuse
- Amp:20A-120A



- AGU-02
- AGU FUSE HOLDER
- 4/8GA IN-4/8GA OUT
- Amp:20A-120A



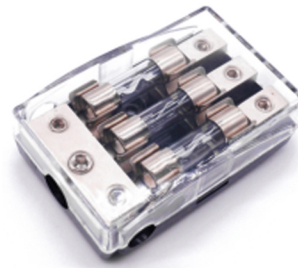
- AGU-15
- AGU FUSE HOLDER
- 4/8GA IN-4/8GA OUT
- Amp:20A-120A



- AGU-21
- AGU FUSE HOLDER
- 4/8GA IN-4/8GA OUT
- Amp:20A-120A



- AGU-22
- AGU FUSE HOLDER
- 1X2GA+2X4GA IN-2X8GA OUT
- Amp:20A-120A



- AGU-23
- AGU FUSE HOLDER
- 1X2GA+2X4GA IN-3X8GA OUT
- Amp:20A-120A



- ABF-404
- Mini ANL Fuse
- Amp:20A-200A



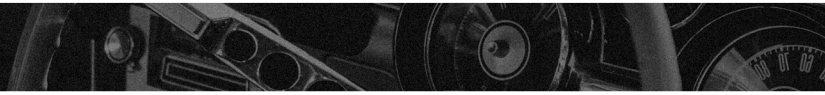
- ABF-405
- Mini ANL Fuse
- Amp:20A-200A



- AFS-01
- Mini ANL Fuse Holder
- 4/8GA IN-4/8GA OUT
- Amp:20A-200A



- AFS-07
- Mini ANL Fuse Holder
- 4/8GA IN-4/8GA OUT
- Amp:20A-200A



CAR FUSE HOLDER



- AFS-03
- Mini ANL Fuse Holder
- 4/8GA IN-4/8GA OUT
- Amp:20A-200A



- AFS-16
- Mini ANL Fuse Holder
- 4/8GA IN-4/8GA OUT
- Amp:20A-200A



- AFS-11
- Mini ANL Fuse Holder
- 4/8GA IN-4/8GA OUT
- Amp:20A-200A



- AGU-21
- AGU FUSE HOLDER
- 4/8GA IN-4/8GA OUT
- Amp:20A-120A



- AFS-22
- Mini ANL Fuse Holder
- 1X2GA+2X4GA IN-2X8GA OUT
- Amp:20A-200A



- AFS-23
- Mini ANL Fuse Holder
- 1X2GA+2X4GA IN-3X8GA OUT
- Amp:20A-200A



- AFS-14
- Mini ANL Fuse Holder
- 3X4GA IN-4X8GA OUT
- Amp:20A-200A



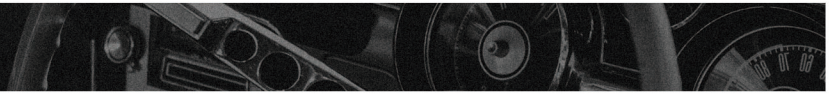
- AFS-30
- Mini ANL Fuse Holder
- 2x0/4GA IN-4x4/8GA OUT
- +2x0/4GA IN-4x4/8GA OUT
- Amp:20A-200A



- ANS-H
- MIDI Fuse Holder
- Amp:20A-200A



- ANS-H12
- MIDI Fuse Holder
- Amp:20A-200A



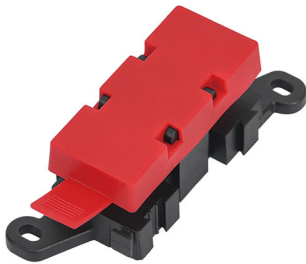
CAR FUSE HOLDER



- FB-101
- MIDI Fuse Holder
- Amp:20A-200A



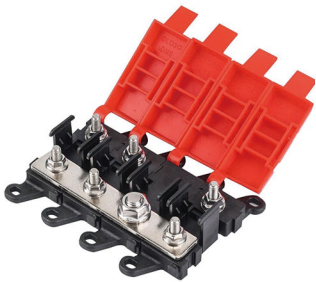
- FB-701
- MIDI Fuse Holder
- ANS Fuse:30A-100A
- ANM Fuse:40A-200A
- Install size:165mm



- DMS-1
- MIDI Fuse Holder
- Amp:20A-200A



- DMS-3
- MIDI Fuse Holder
- Amp:20A-200A



- DMS-4
- MIDI Fuse Holder
- Amp:20A-200A



- DMS-7
- MIDI Fuse Holder
- Amp:20A-200A



- FB-401
- MIDI+MEGA Fuse Holder
- 4 WAY MIDI
- 1 WAY MEGA



- FB-402
- MIDI+MEGA Fuse Holder
- 4 WAY MIDI
- 2 WAY MEGA



- ABF-406
- MEGA Fuse
- Amp:100A-300A
- Rated voltage: 32V



- MEGA-1
- MEGA/ANM Fuse Holder
- Amp:100A-300A
- Rated voltage: 32V

CAR FUSE HOLDER



- ANLF1
- ANL Fuse
- Amp:35-750A
- Rated voltage: 32V



- ABF-407
- ANL Fuse (STS-Fuse)
- Amp:40-500A
- Rated voltage: 32V



- BB100-ANL
- ANL Fuse Holder
- Rated Amp:35-500A
- Rated voltage: 32V



- BB500-ANL3
- ANL Fuse Holder
- 1 IN 3-6 OUT
- Max Amp:1000A
- 6MM Pure Copper Plate



- BB300-ANL
- ANL Fuse Holder
- Max Amp:750A
- 6MM Pure Copper Plate
- Rated voltage: 32V



- BB500-ANL2
- ANL Fuse Holder
- Max Amp:750A
- 6MM Pure Copper Plate
- Rated voltage: 32V



- ANL-04
- ANL Fuse Holder
- 0/4GA IN-0/4GA OUT
- Rated Amp:35-750A
- Rated voltage: 32V



- ANL-20
- ANL Fuse Holder
- 0/4GA IN-0/4GA OUT
- Rated Amp:35-750A
- Rated voltage: 32V



- ANL-07-2
- ANL Fuse Holder
- 0/4GA IN-0/4GA OUT
- Rated Amp:35-750A
- Rated voltage: 32V



- ANL-33
- ANL Fuse Holder
- 0/4GA IN-0/4GA OUT
- Rated Amp:35-750A
- Rated voltage: 32V

CAR FUSE HOLDER



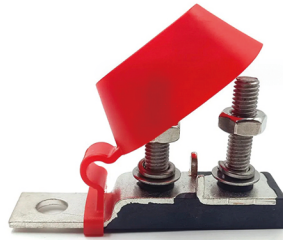
- MRBF-Amp
- Waterproof MRBF fuse
- Rating:30A 40A 50A 60A
75A 80A 90A 100A 125A
150A 175A 200A 250A 300A
400A 500A



- FB-2014
- MRBF fuse block
- 30A-500A/58V
- Stud:M8,L=47mm



- MRBF-Amp
- MRBF fuse
- Rating:30A 40A 50A 60A
75A 80A 90A 100A 125A
150A 175A200A 250A 300A
400A 500A



- FB-2016
- MRBF Dual Fuse Block
- 30A-500A/58V
- Stud:M8,L=47mm

RELAY BOX



- RB-R2F6-W1
- 6 Way Wired Relay Socket
- 2x40A 5Pin Relay +12PCS ATC/ATO Fuses



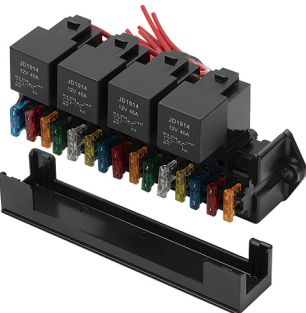
- RB-R3F3S-W
- 3 Way Wired Waterproof Relay Socket
- 3x40A 5Pin Relay +3PCS ATC/ATO Fuses



- RB-R4F12-W2-4P
- 12 Way Wired Relay Socket
- 4x40A 5Pin Relay
- 12PCS ATC/ATO Fuses



- RB-R4F12-W1
- 12 Way Wired Relay Socket
- 4x40A 5Pin Relay
- 12PCS ATC/ATO Fuses



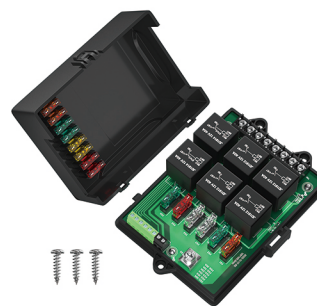
- RB-R4F15-W1
- 15 Way Wired Relay Socket
- 4x40A 5Pin Relay
- 15PCS ATC/ATO Fuses



- RB-R6F6
- 6 Way Relay Socket
- 16PCS ATC/ATO Fuses
- 41PCS terminals



- RB-R6F6-RF
- 6 Way Relay Socket with terminals
- 5x40A 5Pin Relay +1 RTT7121 Relay
- 16PCS ATC/ATO Fuses
- 41PCS terminals



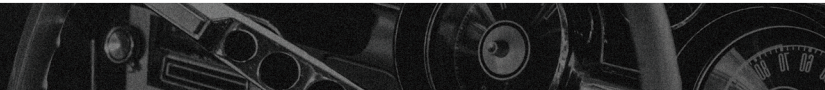
- RB-R6F6-3
- 6 Way PCB Relay Socket
- 4x40A 4Pin Relay +2x 5Pin Relay
- 14PCS ATC/ATO Fuses



- RB-R6F6-RF-W1-B
- Wireless Control 6 Way Relay Socket
- 5x40A 5Pin Relay +1 RTT7121 Relay
- 16PCS ATC/ATO Fuses
- 41PCS terminals



- RB-R6F6-RF-W1-B
- Wireless Control 6 Way Relay Socket
- 5x40A 5Pin Relay +1 RTT7121 Relay
- 16PCS ATC/ATO Fuses
- 41PCS terminals



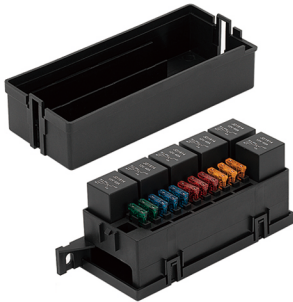
RELAY BOX



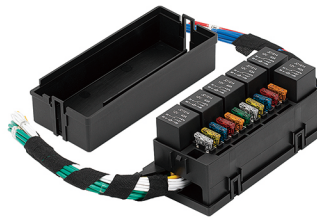
- RB-R6F6-W2
- 6 Way Wired Relay Socket
- 6x40A 4Pin Relay



- RB-R6F6S-W1
- 6 Way Wired Waterproof Relay Socket
- 6x40A 4Pin Relay



- RB-R6F11
- 11 Way Relay Socket with terminals
- 6x40A 5Pin Relay
- 11PCS ATC/ATO Fuses
- 52PCS terminals



- RB-R6F11-W1
- 11 Way Wired Relay Socket
- 6x40A 5Pin Relay
- 13PCS ATC/ATO Fuses
- 52PCS terminals



- RB-R10F15
- 10 Way Relay Socket
- 30PCS ATC/ATO Fuses
- 50PCS terminals



- RB-R10F15-W1
- 15 Way Wired Relay Socket
- 10x40A 5Pin Relay
-

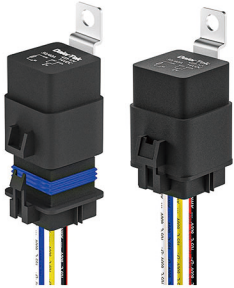


- RB-R8F12-W1
- 12 Way Wired Relay Socket
- 6x40A 4Pin Relay
- 2x40A 5Pin Relay



- RB-R16F24-RF
- 24 Way Relay Socket
- 16x40A 5Pin Relay
- 24PCS ATC/ATO Fuses

RELAY BOX



- JD1912-W12V
- Waterproof Relay
- 5PINS, SPDT, 12V
- 15CM Wired
- Can be 4 Pins



- JD1914-2
- Max. Switching Current: 40A
- Max. switching voltage: 14V
- Min. Contact Power: 560W
- Terminal: 4Pin
- Fuse Type: Standard



- KH180-120-12
- Nominal Voltage(VDC): 12V
- Max Applicable Voltage (VDC) : 15.6V
- Switching Current: 120A
- Contact Form: Normal Open



- WM686-250A
- Remote Control Relay
- 250A 12VDC
- 2*Wireless Keys



- WM686-200A-2K
- Remote Control Relay
- 200A 12VDC
- 2*Wireless Keys



- ASW-A401
- Smart Battery Isolator
- 12V140A
- LED ON Cut in 13.3VDC
- LED OFF Cut out 12.8VDC



- ASW-A401M-1
- Smart Dual battery isolator with Manual Control Button
- 12V140A
- LED ON Cut in 13.3VDC
- LED OFF Cut out 12.8VDC



- RL-240A-RCM2
- 240A Remote Control Battery Disconnect Switch
- Continuous Rating: 240A 12VDC



- RL-240A-RC
- 240A Remote Control Battery Disconnect Switch
- Continuous Rating: 240A 12VDC



- RL-240A-RCM3-VD
- 240A Remote Control Battery Disconnect Switch with Voltage Display
- Continuous Rating: 240A 12VDC

CIRCUIT BREAKERS



- CB-01
- Input:DC12-48V
- 4/8GA IN-4/8GA OUT
- Optional:20A-100A



- CB-03
- Input:DC12-48V
- Optional:30A-300A
- Terminal Stud:M6(1/4")



- CB-04
- Input:DC12-48V
- Optional:30A-300A
- Suit Gauge Wire:0-4AWG



- CB-05
- Input:DC12-48V
- Optional:30A-300A
- Suit Gauge Wire: 0-8AWG



- CB-06
- Input:DC12-48V
- Optional:50A-200A
- Terminal Stud:M6(1/4")



- E518 Stud Type Circuit Breakers
- Input:DC12-48V
- Optional:5A-50A



- ST-2A
- 125/250VAC/32VDC
- 15A-50A



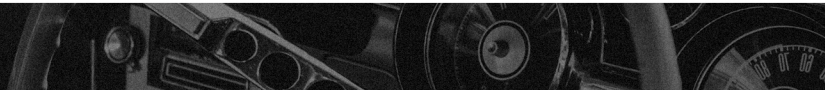
- E39 Manual (T3) Reset
- ATC/ATO Circuit Breakers
- DC 28V
- 5A-30A



- CB-61
- Input: DC12-48V
- Optional:30A-300A
- Terminal Stud:M8 (5/16")



- CB-03-CV
- Waterproof Protect Cover for CB-03 Breaker



MARINE SWITCH



- DR-A11102AB
- Function:SPST ON-OFF
- Terminal:2PIN
- LED:Without LED
- Logo can be printed



- DR-A11702AB
- Function:SPST ON-OFF
- Terminal:2PIN
- LED:Without LED
- Logo can be printed



- DR-A11813A
- Function:SPST ON-OFF
- Terminal:3PIN
- LED:One LED
- Color: Blue/Red/Green
- Logo can be printed



- DR-A11313A
- Function:SPST ON-OFF
- Terminal:3PIN
- LED:One LED
- Color: Blue/Red/Green
- Logo can be printed



- DR-A11625A
- Function:SPST ON-OFF
- Terminal:5PIN
- LED:Two LED
- Color: Blue/Red/Green
- Logo can be printed



- DR-A11L25A
- Function:SPST ON-OFF
- Terminal:5PIN
- LED:Two LED
- Color: Blue/Red/Green
- Logo can be laser



- DR-A12927EBL
- Function:DPDT ON-OFF-ON
- Terminal:7PIN
- LED:Two LED
- Color: Blue/Red/Green
- Logo can be printed



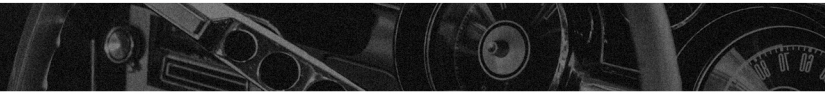
- DR-A11X25ABL
- Function:SPST ON-OFF
- Terminal:5PIN
- LED:Two LED
- Color: Blue/Green
- Any Logo can be lasered



- DR-A11L25BL-LB4
- Function:SPST(ON)-OFF
- Terminal:5PIN
- LED:Two LED
- Color: Blue Horn
- Any Logo can be lasered



- DR-A11L27GBL-LJ56
- Function:SPDT (ON)-OFF-(ON)
- Terminal:7PIN
- LED:Two LED
- Color: Blue Winch Symbol
- Any Logo can be lasered



MARINE SWITCH



- DR-PBS-T001
- Toyota Switch
- Function:ON-OFF
- LED: Blue&Green
- Size:33X22MM New Style



- DR-PBS-T002
- Fog lamp switch for Toyota
- Function:ON-OFF
- LED: Blue
- Size:39X25MM Old Style



- Cargo and Fog Lamp Switch
- D7096C, 15143597, 1S14820.
- 15076588, D7096C



- DR-T20A-B
- Dual Button Push Switch
- Function:ON-OFF
- LED: Blue&Green
- Size:33X22MM



- ASW-B05
- Start Push Button Switch
- 2PIN Screw Terminal



- A2-23B-07
- Start Push Button Switch
- 3PIN Screw Terminal
- LED: 12V Red/Green/Blue



- KCD2-201-B
- Heavy Duty Rcocker Switch
- 30A 250VAC;40A 12V
- DPST ON OFF
- T125 IE4



- KCD2-201N-B
- Heavy Duty Rcocker Switch
- 30A 250VAC;40A 12V
- DPST ON OFF With Light
- T125 IE4



- KCD1-8-101EN
- Dot Lighted Round Switch
- 20A 12V
- SPST ON OFF



- KCD2-7-223B
- EXTEND RETRACT Rocker Switch
- 15A 250VAC;20A 50VDC
- 4PIN DPDT (ON)-OFF-(ON)

MARINE SWITCH



- KN3C-123AA
- Car TOGGLE SWITCH
- SPDT (ON)-OFF-(ON)
- 15A 250VAC
- Screw Terminal



- KN3C-223AAP
- REVERSE POLARITY-TOGGLE SWITCH
- 4PIN DPDT (ON)-OFF-(ON)
- 15A 250VAC
- PC Terminal can with wire



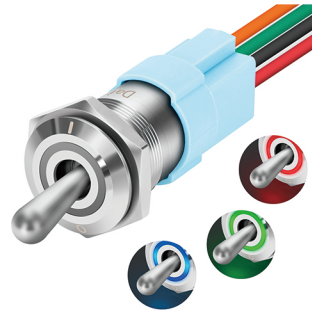
- R13-401-101
- Heavy Duty toggle Switch
- SPST ON OFF
- 50A 12V
- 2PIN Screw Terminal



- R13-501-101
- Heavy Duty toggle Switch
- SPST ON OFF
- 50A 12V
- 2PIN Screw Terminal
- With Red/Blue/Yellow/Black Rubber



- TS16-10EL-RGB
- 16mm Metal Led Toggle Switch
- 6Pin RGB Ring LED
- IP67 ON OFF 20A 12V



- TS16-11EL-RGB
- 16mm Metal Led Toggle Switch
- 7Pin RGB Ring LED
- IP67 ON ON 20A 12V



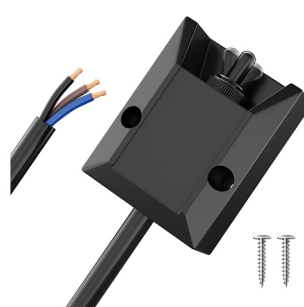
- LAS3-16H-11EM-N-Horn
- 16mm Metal Push Button Switch
- IP67 OFF-(ON)Momentary
- 5A 12V
- LED Color:Red/Blue/Yellow



- LAS3D-19F-10EL/S
- 19mm Metal Push Button Switch
- IP67 OFF ON Latching
- 20A 12V
- LED Color:Red/Blue/Yellow



- 264346-101
- Sealed Switch
- IP67 ON-OFF
- 2*55CM Wire



- 264346-123
- Sealed Switch
- IP67 (ON)-OFF-(ON)
- 3*60CM Wire

MARINE SWITCH PANEL



- PN-DR-A12106GB-2
- Rating:12V 20A
- Wire: 16AWG 15CM
- Function:DPDT (ON)-OFF-(ON)
- Extend Retract Switch Panel



- PN-AB2
- Rating:12V 20A
- Function:SPDT ON OFF ON
- LED:DUAL BLUE LED
- Bilge Pump Switch Panel



- PN-BPS-1
- Rating:12V 5A
- Function:MANUAL OFF AUTO
- 12V Green and Red Light
- 5A Fuse Holder



- PN-1812
- Input Voltage:12-24V
- Max Current:12V 20A/24V 10A
- Material:ABS+Aluminum
- Switch Function:ON OFF
- Color:Red/Green/Blue



- PN-1812-LJ34+LJ60
- Input Voltage:12-24V
- Max Current:12V 20A/24V 10A
- Material:ABS+Aluminum
- Switch Function:ON OFF
- Color:Red/Green/Blue



- PN-1813
- Input Voltage:12-24V
- Max Current:12V 20A/24V 10A
- Material:ABS+Aluminum
- Switch Function:ON OFF
- Color:Red/Green/Blue



- PN-1813-L
- Input Voltage:12-24V
- Max Current:12V 20A/24V 10A
- Material:ABS+Aluminum
- Switch Function:ON OFF
- Color:Red/Green/Blue



- PN-1813-L2U1-2
- Input Voltage:12-24V
- Max Current:12V 20A/24V 10A
- Output:5V 4.8A
- Material:ABS+Aluminum
- Switch Function:ON OFF
- Color:Red/Green/Blue



- PN-1814-A11625
- Input Voltage:12-24V
- Max Current:12V 20A/24V 10A
- Material:ABS+Aluminum
- Switch Function:ON OFF
- Color:Red/Green/Blue



- PN-1814-L3U1-2
- Input Voltage:12-24V
- Max Current:12V 20A/24V 10A
- Output:5V 4.8A
- Material:ABS+Aluminum
- Switch Function:ON OFF
- Color:Red/Green/Blue

CAR FUSE HOLDER



- PN-1814-A11625
- Input Voltage:12-24V
- Max Current:12V 20A/24V 10A
- Material:ABS+Aluminum
- Switch Function:ON OFF
- Color:Red/Green/Blue



- PN-1815
- Input Voltage:12-24V
- Max Current:12V 20A/24V 10A
- Material:ABS+Aluminum
- Switch Function:ON OFF
- Color:Red/Green/Blue



- PN-1815-L4U1-2
- Input Voltage:12-24V
- Max Current:12V 20A/24V 10A
- Output:5V 4.8A
- Material:ABS+Aluminum
- Switch Function:ON OFF
- Color:Red/Green/Blue



- PN-1816
- Input Voltage:12-24V
- Max Current:12V 20A/24V 10A
- Material:ABS+Aluminum
- Switch Function:ON OFF
- Color:Red/Green/Blue



- PN-1816-L5U1-2
- Input Voltage:12-24V
- Max Current:12V 20A/24V 10A
- Output:5V 4.8A
- Material:ABS+Aluminum
- Switch Function:ON OFF
- Color:Red/Green/Blue



- PN-1816-A11813ABL
- Input Voltage:12-24V
- Max Current:12V 20A/24V 10A
- Material:ABS+Aluminum
- Switch Function:ON OFF
- Color:Blue



- PN-R452-2
- QC3.0+Type C USB
- 12V LED Cigarette Lighter Socket
- Material:ABS+Aluminum
- Switch Function:ON OFF
- Color:Red/Green/Blue



- PN-R553-4.8A
- Dual 4.8A USB
- 12V Cigarette Lighter Socket
- 5-48V Waterproof Voltmeter
- Material:ABS+Aluminum
- Switch Function:ON OFF
- Color:Red/Green/Blue



- PN-L553-4.8A
- Dual 4.8A USB
- 12V Cigarette Lighter Socket
- 5-48V Waterproof Voltmeter
- Material:ABS+Aluminum
- Switch Function:ON OFF
- Color:Red/Green/Blue



- PN-L653-2
- Dual 4.8A USB
- 12V Cigarette Lighter Socket
- 5-48V Waterproof Voltmeter
- Material:ABS+Aluminum
- Switch Function:ON OFF
- Color:Red/Green/Blue

MARINE SWITCH PANEL



- PN-1817
- 5V-36V Voltmeter
- 6*ON-OFF Dual Rocker Switch
- Color can be choose



- PN-L8S4-1
- Dual 4.2A USB
- 2x12V Cigarette Lighter Socket
- 5-48V Waterproof Voltmeter
- Material:ABS+Aluminum
- Switch Function:ON OFF
- Color:Red/Green/Blue



- PN-L2S1-P21E
- Input Voltage:12-24V
- Max Current:12V 20A/24V 10A
- Dual QC3.0+TYPE C USB Socket
- Material:ABS+Aluminum
- Switch Function:ON OFF
- Color:Red/Green/Blue



- PN-L6S1-P21
- Input Voltage:12-24V
- Max Current:12V 20A/24V 10A
- QC3.0&Type C USB Socket
- Material:ABS+Aluminum
- Switch Function:ON OFF
- Color:Red/Green/Blue



- PN-R6-101EN
- 6 Gang Switch Panel
- ON OFF LED 12V
- ROCKER SWITCH
- Color: Red/Green/Blue
- Material: Aluminum Plate



- PN-R6L-101EN
- 6 Gang Switch Panel
- ON OFF LED 12V
- ROCKER SWITCH
- Color: Red/Green/Blue
- Material: Aluminum Plate



- DSF-1825-4010W-2013H4.2A-1011
- Dual 4.2A With Switch USB
- 12V Cigarette Lighter Socket
- ON OFF Dot Led Rocker Switch
- 5-48V Waterproof Voltmeter
- Switch Function:ON OFF
- Color:Red/Green/Blue



- DS10M-4.8A
- 4 IN 1 Metal Marine Switch Panel
- ON OFF Lighted Toggle Switch
- 12V Cigarette Lighter Socket
- Dual 4.8A USB Socket
- 5-48V Waterproof Voltmeter
- Color:Red/Green/Blue



- PN-SAC1
- Ignition Switch Panel
- ON OFF Lighted Toggle Switch
- 12V Red Indicator Light
- Transparent Red Guard Cover
- Size:95*36mm



- PN-SAC2
- Ignition Switch Panel
- ON OFF Lighted Toggle Switch
- ON OFF Toggle Switch
- Start Engine Switch
- Transparent Red Guard Cover
- Size:95*65mm

MARINE SWITCH PANEL



- PN-SAC3
- Ignition Switch Panel
- ON OFF Lighted Toggle Switch
- 12V Red Indicator Light
- Start Engine Switch
- Transparent Red Guard Cover
- Size:95*65mm



- PN-SAC3-3
- Ignition Switch Panel
- 3*ON OFF LED Toggle Switch
- Transparent Red Guard Cover
- Size:95*66mm



- PN-SAC4
- Ignition Switch Panel
- 2*ON OFF Toggle Switch
- 12V Red Indicator Light
- Start Engine Switch
- Transparent Red Guard Cover
- Size:95*65mm



- PN-SAC5
- Ignition Switch Panel
- 3*ON OFF Toggle Switch
- ON OFF Lighted Toggle Switch
- Start Engine Switch
- Transparent Red Guard Cover
- Size:150*65mm



- PN-SAC3-2
- Ignition Switch Panel
- ON OFF Toggle Switch
- 12V Red Indicator Light
- Start Engine Switch
- Red Guard Cover



- PN-SAC2-2
- Ignition Switch Panel
- 2xON OFF Toggle Switch
- 2x12V Indicator Light
- Start Engine Switch
- Red Guard Cover

ELECTRONIC RELAY SYSTEM



- SP-052
- 4 Way Switch Box
- Input:12-24V
- Material: Metal+ABS
- Light Color: Green/Blue/Red



- SP-053
- 6 Way Switch Box
- Input:12-24V
- Material: Metal+ABS
- Light Color: Green/Blue/Red



- PN-SR5U6
- 6 Gang Switch Panel Electronic
- Relay System
- Input:12-24V
- Material: Metal+ABS
- Light Color: Green/Blue



- PN-SR6U6G
- 6 Gang Switch Panel Electronic
- Relay System
- Input:12-24V
- Material: Metal+ABS
- Light Color: Green/Blue



- Part:PN-SP4100B
- 4 Gang Switch Panel
- Input:12-24V
- Material: Metal+ABS
- Light Color: RGB



- Part:PN-SP6100B
- 4 Gang Switch Panel
- Input:12-24V
- Material: Metal+ABS
- Light Color: RGB



- PN-SPRF8
- Wireless 8 Gang Switch Panel
- Type C Charger
- Wireless Control
- Material: Metal+ABS
- Light Color: Green



- PN-SP8100B
- 8 Gang Switch Panel
- Input:12-24V
- Material: Metal+ABS
- Light Color: Green
- Function: Physical Button



- PN-SP81501
- Bluetooth 8 Gang Switch Panel
- Input:12-24V
- Material: Metal+ABS
- Light Color: RGB
- Function: Bluetooth APP/
Physical Button



- Part:PN-SP12100B
- 12 Gang Switch Panel
- Input:12-24V
- Material: Metal+ABS
- Light Color: RGB
- Function: Physical Button

ELECTRONIC RELAY SYSTEM



- PN-RSP5
- IP68 5 Gang Rubber Switch Panel
- Input: 12/24VDC
- Power: 12V/600W-24V /1200W
- Current Load: 60A
- Light Color: RGB



- PN-RSP6
- IP68 6 Gang Rubber Switch Panel
- Input: 12/24VDC
- Power: 12V/600W-24V /1200W
- Current Load: 60A
- Light Color: RGB



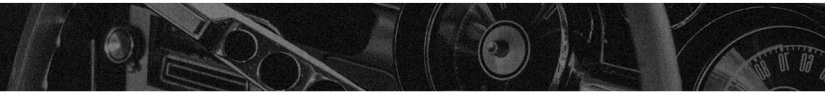
- PN-RSP8
- Rubber Switch Panel IP68 8 Gang
- Input: 12/24VDC
- Power: 12V/600W-24V /1200W
- Current Load: 60A
- Light Color: RGB



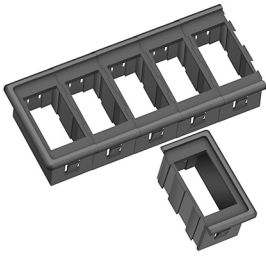
- PN-RSP12
- IP68 12 Gang Rubber Switch Panel
- Input: 12/24VDC
- Power: 12V/1000W-24V /1500W
- Current Load: 60A
- Light Color: RGB



- PN-RSP16
- IP68 16 Gang Rubber Switch Panel
- Input: 12/24VDC
- Power: 12V/1200W-24V /1700W
- Current Load: 60A
- Light Color: RGB



MOUNTING PANEL ACCESSORIES



- Mounting Panel End/Middle
- PN-BS1 Mounting Panel End
- PN-BS2 Mounting Panel Middle



- Single Mounting Panel
- PN-BS3



- Actuator Removal Tool
- PN-BS7



- 8 pins Connectors
- PN-BS8



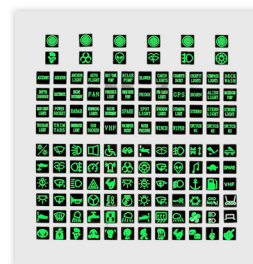
- Hole Plug
- PN-BS6



- Round Panel Mounting Connector
- DS1825
- Used for Round rocker switch



- Boat Switch Clear Labels
- PN-BS22



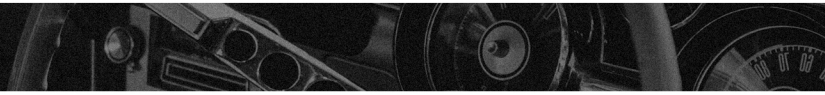
- Boat Switch Luminous Stickers
- PN-BS21



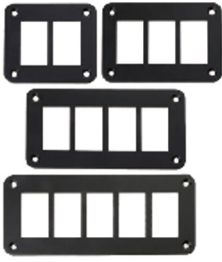
- Rocker Switch Mounting Bracket
- DS-S1-T
- Used for 12MM



- Rocker Switch Mounting Bracket
- DS-S1-L
- Used for Marine Switch



MOUNTING PANEL ACCESSORIES



- Black Anodized Aluminium
- Used for Marine Switch
- 1/2/3/4/5/6/8 Hole



- Black Anodized Aluminium
- DS-S15



- Black Anodized Aluminium
- DS-S6R3



- USB Socket Mounting Panel



- USB Socket Tent



- Cable for DC Sockets



- FDFD2-250
- Fully Insulated Female
- Quick Disconnects
- Size:0.8*6.35mm



- Marine Switch Wire Sets
- PN-BS23
- For 5PIN Dual LED
- 6.35X0.8MM Connecotr
- DJ622-J6.3C Terminal
- 16AWG Red/Black/Orange

USB CHARGER



- DS2013
- Output:5V 3.1A
- Input:12-24V
- Material:Fireproof ABS
- Color:Red/Green/Blue



- DS2013-2
- Output:5V 3.1A
- Input:12-24V
- Material:Fireproof ABS
- Color:Red/Green/Blue



- DS2013H-4.2A
- Output:5V 4.2A
- Input:12-24V
- Material:Fireproof ABS
- Color:Red/Green/Blue



- DS2013H-4.2A-S
- Output:5V 4.2A
- Input:12-24V
- Material:Fireproof ABS
- Color:Red/Green/Blue



- DS2013H-7.2A-S
- USB QC3.0 Output:DC5V 3A
- Input:DC9-30V
- DC9V 2A/DC12V 1.5A
- Color:Red/Green/Blue
- Material:Fireproof ABS



- DS2013-P6
- Output:5V 3.1A
- Input:12-24V
- Material:Fireproof ABS
- Color:Red/Green/Blue



- DS2013-P10
- USB QC3.0 Output:DC5V 3A
- Input:12-24V
- DC9V 2A/DC12V 1.5A
- Material:Fireproof ABS
- Color:Red/Green/Blue



- DS2013-P11
- USB QC3.0 Output:DC5V 3A
- Input:12-24V
- DC9V 2A/DC12V 1.5A
- Material:Fireproof ABS
- Color:Red/Green/Blue



- DS2013-P13
- Input Voltage:12-24V
- USB QC3.0 Output:DC5V 3A
- DC9V 2A/DC12V 1.5A
- Output of TYPE C: 5V 3.6A / 9V 2.66A/ 12V 2A
- Color:Red/Green/Blue



- DS2013-P14
- Input Voltage:12-24V
- USB Output:DC5V 4.2A
- Material:Fireproof ABS
- Color:Red/Green/Blue

USB CHARGER



- DS2013-P19
- Input Voltage:12-24V
- USB QC3.0 Output:DC5V 3A
- DC9V 2A/DC12V 1.5A
- Output of TYPE C: 5V 3.6A /
- 9V 2.66A/ 12V 2A
- Color:Red/Green/Blue



- DS2013-P21
- Input Voltage:12-24V
- USB QC3.0 Output:DC5V 3A
- DC9V 2A/DC12V 1.5A
- Output of TYPE C: 5V 3.6A /
- 9V 2.66A/ 12V 2A
- Color:Red/Green/Blue



- DS2013-P22
- Input Voltage:12-24V
- USB QC3.0 Output:DC5V 2.4A
- DC9V 2A/DC12V 3A
- Output of TYPE C: 5V 2.4A /
- 9V 3A/ 12V 3A/15V 2A/20V/3A
- Color:Red/Green/Blue



- DS2013-V-S
- Input Voltage:12-24V
- USB QC3.0 Output:DC5V 3A
- DC9V 2A/DC12V 1.5A
- Color:Red/Green/Blue



- Metal DS9601-BK
- Input Voltage:12-24V
- USB QC3.0 Output:DC5V 3A
- DC9V 2A/DC12V 1.5A
- Output of TYPE C: 5V 3.6A /
- 9V 2.66A/ 12V 2A
- Color:Red/Green/Blue



- Metal DS9602
- Input Voltage:12-24V
- USB QC3.0 Output:DC5V 3A
- DC9V 2A/DC12V 1.5A
- Output of TYPE C: 5V 3.6A /
- 9V 2.66A/ 12V 2A
- Color:Red/Green/Blue



- Metal DS9602-S
- Input Voltage:12-24V
- USB QC3.0 Output:DC5V 3A
- DC9V 2A/DC12V 1.5A
- Output of TYPE C: 5V 3.6A /
- 9V 2.66A/ 12V 2A
- Color:Red/Green/Blue



- DS9603-4.8A
- Input Voltage:12-24V
- Output:5V 4.8A
- Material:Aluminum alloy
- Color:Red/Green/Blue



- DS2013-E
- Input Voltage:12-24V
- Output:5V 4.2A
- Material:Fireproof ABS
- Color:Red/Green/Blue



- DS2013-E-P21
- Input Voltage:12-24V
- USB QC3.0 Output:DC5V 3A
- DC9V 2A/DC12V 1.5A
- Output of TYPE C: 5V 3.6A /
- 9V 2.66A/ 12V 2A
- Color:Red/Green/Blue

USB CHARGER



- DS2013-L
- Input Voltage:12-24V
- Output:5V 4.2A
- Material:Fireproof ABS
- Color:Red/Green/Blue
-
-



- DS2013-L-P21
- Input Voltage:12-24V
- USB QC3.0 Output:DC5V 3A
- DC9V 2A/DC12V 1.5A
- Output of TYPE C: 5V 3.6A / 9V 2.66A/ 12V 2A
- Color:Red/Green/Blue



- DS2013-P26
- Input Voltage:12-24V
- Dual USB QC3.0 Output: DC5V 3A
- DC9V 2A/DC12V 1.5A
- Output of TYPE C: 5V 3.6A / 9V 2.66A/ 12V 2A
- Color:Red/Green/Blue



- DS2013-P25
- Input Voltage:12-24V
- USB QC3.0 Output:DC5V 3A
- DC9V 2A/DC12V 1.5A
- Dual Output of TYPE C: 5V 3.6A / 9V 2.66A/ 12V 2A
- Color:Red/Green/Blue



- DS2013-P23
- Input Voltage:12-24V
- Dual USB QC3.0 Output: DC5V 3A
- DC9V 2A/DC12V 1.5A
- Output of TYPE C: 5V 3.6A / 9V 2.66A/ 12V 2A
- Color:Red/Green/Blue



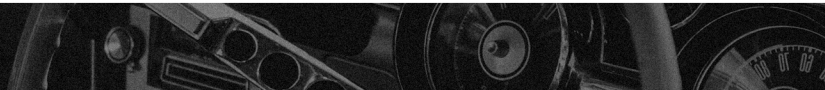
- DS2013-P24
- Input Voltage:12-24V USB QC3.0 Output:DC5V 3A
- DC9V 2A/DC12V 1.5A
- Dual Output of TYPE C: 5V 3.6A / 9V 2.66A/ 12V 2A
- Color: Red/Green/Blue



- DS2013-P27
- Input Voltage:12-24V
- USB QC3.0 Output :DC5V 3A/ DC9V 2A/ DC12V 1.5A
- Dual Output of TYPE C: 5V 3.6A/ 9V 2.66A/ 12V 2A
- Color:Red/Green/Blue



- DS2013-P30
- Input Voltage :12-24V
- USB QC3.0 Output :DC5V 3A/ DC9V 2A/ DC12V 1.5A
- Output of TYPE C: 5V 3.6A / 9V 2.66A/ 12V 2A
- Color: Red/Green/Blue



DIGITAL DISPLAY VOLTMETER



- DS4010
- Input Voltage:12-24V
- Output:5V-30V
- Material:Fireproof ABS
- Color:Red/Green/Blue



- DS4010AS-12V
- Input Voltage:12-24V
- Output:5V-36V
- Material:Fireproof ABS
- Color:Red/Green/Blue



- DS4010-S
- Input Voltage:12-24V
- Output:5V-30V
- Material:Fireproof ABS
- Color:Red/Green/Blue



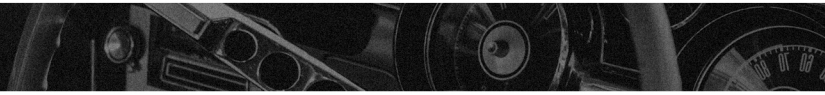
- DS4010-W
- Input Voltage:12-24V
- Output:5V-30V
- Material:Fireproof ABS
- Color:Red/Green/Blue



- DS4010D
- Input Voltage:12-24V
- Output:5V-30V
- Material:Fireproof ABS
- Color:Red/Green/Blue



- DS8010
- Input Voltage:5-48V
- 0-10A
- Material:Fireproof ABS
- Color:Red/Green/Blue



POWER SOCKET



- DS1011
- Input Voltage:12-24V
- Output Power:250W
- Material:Fireproof ABS



- DS1011-L
- Input Voltage:12-24V
- Output Power:250W
- Material:Fireproof ABS
- Light Color:Blue/Red/Green



- DR-Y5
- Input Voltage:12V-24V
- Max Amps:10A
- Output Power:120W
- Material:Fireproof ABS
- Only Plug



- DR-Y6
- Input Voltage:12V-24V
- Max Amps:10A
- Output Power:120W-250W
- Material:Fireproof ABS
- Work with the lighters and Plug



- DR-Y7
- Input Voltage:12V-24V
- Max Amps:10A
- Output Power:120W
- Material:Fireproof ABS
- Only Plug



- DR-Y8
- Input Voltage:12V-24V
- Max Amps:10A
- Output Power:120W-250W
- Material:Fireproof ABS
- Work with the lighters and Plug



- DS5015
- Input Voltage:12-24V
- Output Power:250W
- Material:Fireproof ABS
- Euro Power Socket



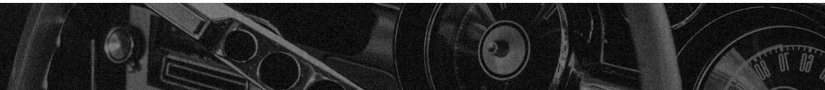
- DE-05
- Input Voltage:12-24V
- Max Amp:15A 12V/10A 24V
- Material:Fireproof ABS
- Euro Power Plug



- DR-03
- With Cable&LED
- Can be customeds



- DR-032S30
- Cigarette Plug With 2 Sockets
- And 30CM Length Wires



POWER SOCKET

- DR-07
- With Cable&LED&Plug



- DR-08
- Cigarette Lighter with
- two rocker switches,
- with 300cm wire lead
- Can be customized

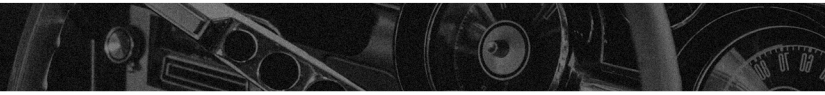


- USB-B5
- Dual Charge 3.0
- with BMW Cig plug
- Only for BMW



- SL01
- With Switch&LED





ANDERSON



- Anderson Powerpole
- 15/30/45A, 75A, 120A, 180A
- Rated voltage: 600V
- Wire Size: 14/12/10AWG



- PVC Cover
- Used for Powerpole



- Anderson Power SB50 Series
- 50A, 120A, 175A, 350A
- Rated voltage: 600V
- Wire Size: 2-4AWG



- Rubber Cover
- Used for Anderson SB Series



- DS2001
- BASE:PA66
- 50A Anderson



- DS2001D
- BASE:PA66
- 2*50A Anderson



- DS2003
- BASE:PA66
- 50A Anderson
- DS1011 Power Socket
- DS2013 Dual 3.1A USB Socket
- Two 1-1/8" Panel Mount Holes



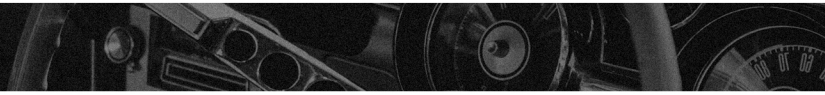
- DS2002
- BASE:PA66
- 50A Anderson
- DS1011 Power Socket
- One 1-1/8" Panel Mount Holesw



- Custom Cable
- 50A Connector with cable



- 50A Anderson with MC4



DEUTSCH



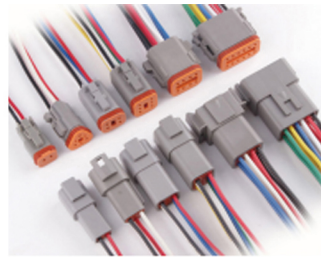
● DT Series Connector



● DTP Series Connector



● DTM Series Connector



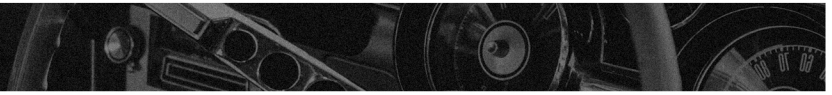
● Connector with Wire



● DT Connector Wiring Harness



● Terminal



RV LOCK



- K-7902
- 1 x RV Keyless Entry Door Lock-
- -with Gasket
- 2 x Key Fobs
- 4 x Mechanical Keys
- 1 x 4-in-1 Screw Driver
- 1 x Mounting Hardware Set
- 1 x Manual



- K-7903
- 1 x RV Keyless Entry Door Lock-
- -with Gasket
- 2 x Key Fobs
- 4 x Mechanical Keys
- 1 x 4-in-1 Screw Driver
- 1 x Mounting Hardware Set
- 1 x Manual



- K-7904
- 4 x Mechanical Keys
- 1 x Pinch Plate
- 1 x Strike Plate
- 8 x Screws



- K-7905
- 1 x RV Keyless Entry Door Lock-
- - with Gasket
- 1 x Key Fobs
- 4 x Mechanical Keys
- 1 x Pinch Plate
- 1 x Strike Plate
- 6 x Screws