

D11-16F-11D
LAS3-16F-11E

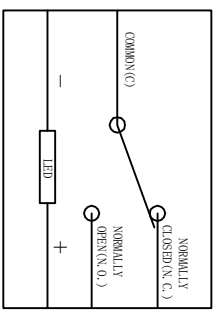
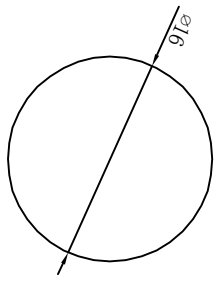
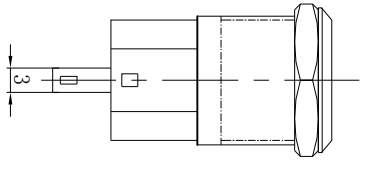
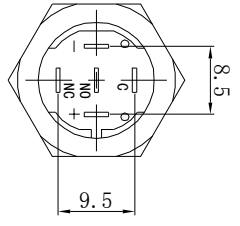
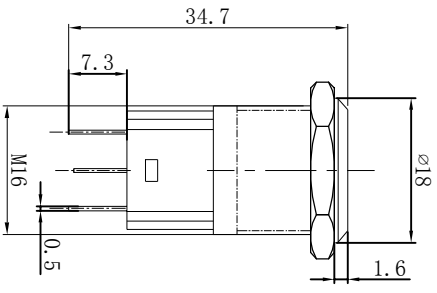
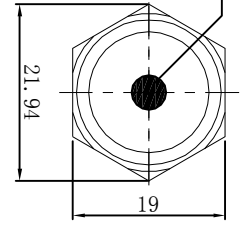


示意图
SCHEMATIC

SPECIFICATIONS

1	Contact Rating:3A @ 250V
2	Electrical Life:50,000cycles
3	Contact Resistance:50m-ohms max (initial)
4	Insulation Resistance:1,000M-ohms min @ 500VDC
5	Dielectric Strength:2,000V RMS 50~60Hz
6	Operating Temperature:-20° C~+55° C
7	Switch function :INO INC
8	IP Class:IP65 Protection
9	Torque:5~14Nm. max. applied to nut
10	Operating Force:5N max
11	LED Color:(red, green, yellow, blue, White)
12	Function



MATERIALS

1. Button:Copper/stainless steel/Aluminum
2. Bushing & Bezel:Copper/stainless steel/Aluminum
3. Base:PA
4. Contact :Silver
5. Nut :Nickel plated brass

设计	处数	分区	更改文件号	签字	日期
设计			标准化		
校对					
审核			批准		
工艺					

按钮开关				Yueqing Daier Electron co., Ltd
Push Button Switch				LAS3-16F-11D
阶段标记	数量	重量	比例	
	1		1.5:1	

